



CRESTWOOD UNIT DESCRIPTIONS

All of The Crestwood condominiums are individually owned and decorated. Each unit has a living room with a fireplace, a fully equipped kitchen with a microwave, a TV/VCR in the living room, and a balcony with a gas BBQ grill and outdoor furniture (except studios). There is a bath for every bedroom. Most units have sofa sleepers in the living room. Queen beds are standard in one of the bedrooms, with additional sleeping areas offering a variety of sleeping accommodations

ONE BEDROOM. Recommended for a couple or a family of three. Maximum occupancy is four people.

ONE BEDROOM/LOFT has the same floor plan as a one bedroom, with the addition of a spacious sleeping loft containing two or three beds. There is a bath adjoining the bedroom and at least a 3/4 bath in the loft. These units are ideal for a family of three to five, or two to four singles. Maximum occupancy is six people.

TWO BEDROOM has the same floor plan as a one bedroom unit with an additional bedroom and bath. Most have a queen bed in one bedroom with the second bedroom having one or two beds. These units are nice for two couples, a family of three to five, or two to four singles. Maximum occupancy is six people.

TWO BEDROOM GRAND offers a larger living/dining room area than the standard two bedroom. There are two separate bedrooms, with two or three bathrooms. This size unit is ideal for two couples, a family of three to four, or two to four singles. Maximum occupancy is six people.

TWO BEDROOM/DEN has a double size living area. Half of the living area converts to a third sleeping area with a third bath. These units are ideal for three to five singles or a family of four to six. Maximum occupancy is eight people.

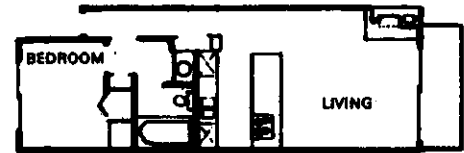
TWO BEDROOM/LOFT has the same floor plan as a two bedroom unit, with an additional sleeping area above the living room. There is a bath for each bedroom, and the loft has at least a 3/4 bath. These units are ideal for three to five singles or a family of four to six. Maximum occupancy is eight people.

TWO BEDROOM/LOFT GRAND. The third sleeping area is an open loft. The third bathroom may be located on the level below the loft sleeping area. In addition, the living/dining area is larger than the standard two bedroom loft unit. This unit is ideal for three to five singles, or a family of four to six. Maximum occupancy is eight people.

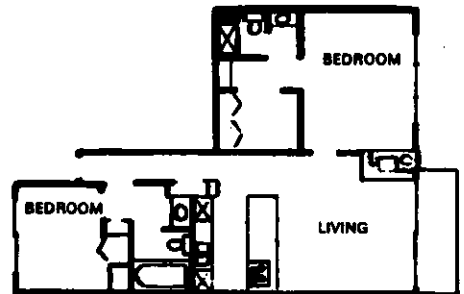
THREE BEDROOM has the same floor plan as the two bedroom with three separate bedrooms and three bathrooms. This unit is recommended for three singles, three couples, or a family of four to six. Maximum occupancy is eight people.

THREE BEDROOM PLUS is a two story condominium with three separate bedrooms and three bathrooms. The plus is a fourth sleeping area on the second level or a loft above the living room. The three bedroom plus has a living room, dining room and kitchen. This is the largest condominium we offer and is ideal for a large family, four to six singles, three couples or two small families. Maximum occupancy is ten people.

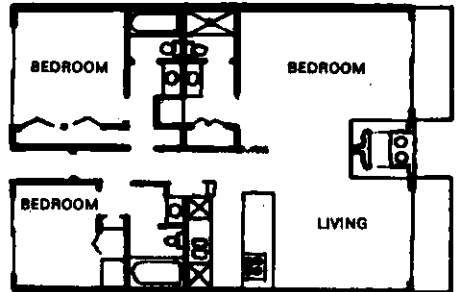
Studio. A single room with an efficiency kitchen and a bath. Most studios DO NOT have a balcony or fireplace. This is an ideal unit for a single or couple. Maximum occupancy is two people.



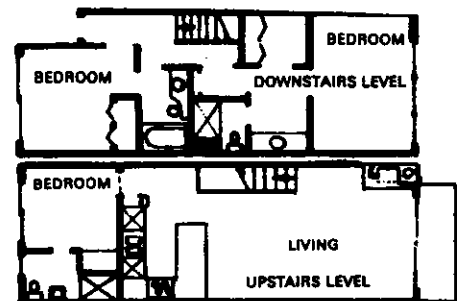
ONE BEDROOM
(672 SQ. FT.)
AVAILABLE WITH LOFT
(ADD 256 SQ. FT.)



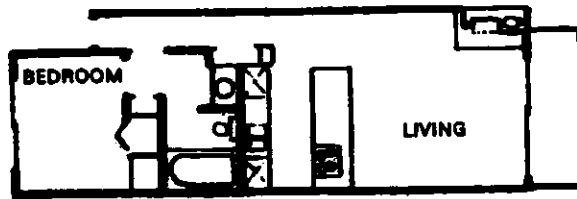
TWO BEDROOM
(1008 SQ. FT.)



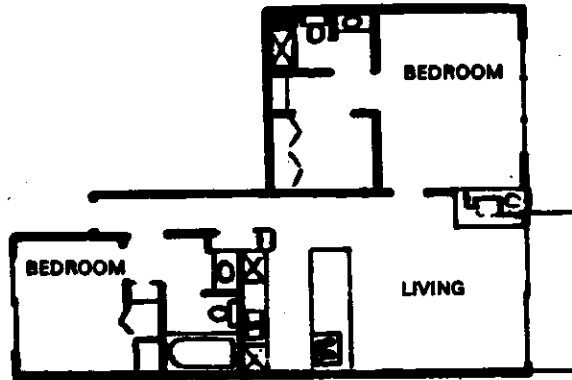
THREE BEDROOM
(1344 SQ. FT.)



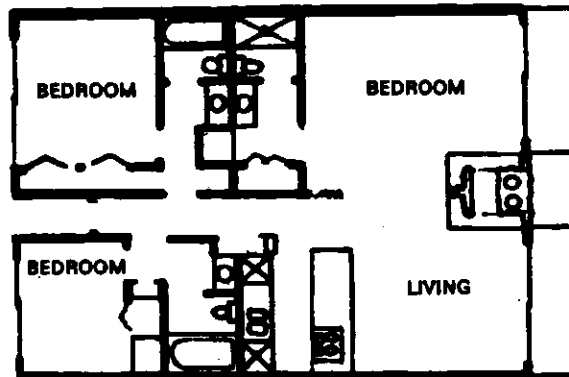
THREE BEDROOM PLUS
WITH LOFT (LOFT NOT PICTURED)
(1544 SQ. FT.)



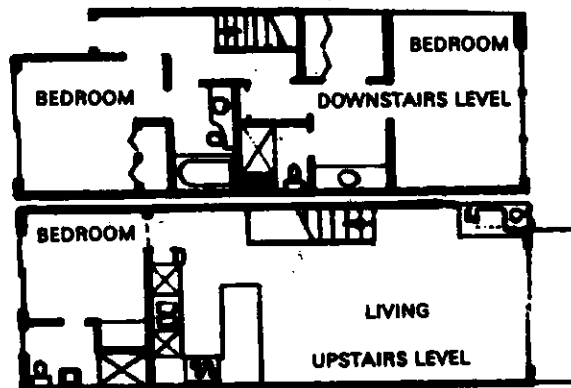
ONE BEDROOM
 (672 SQ. FT.)
AVAILABLE WITH LOFT
 (ADD 256 SQ. FT.)



TWO BEDROOM
 (1008 SQ. FT.)



THREE BEDROOM
 (1344 SQ. FT.)



THREE BEDROOM PLUS
WITH LOFT (LOFT NOT PICTURED)
 (1544 SQ. FT.)